

**Unilumin<sup>®</sup>**  
Stock Code:300232



The **Partner** you can count on!

# Index

---

-  Fundamentals
-  Cutting edge Technologies
-  State-of-the-art Production
-  Highest Reliability
-  Product portfolio
-  Marketing
-  References

# Fundamentals

Leading LED display solution provider





# Brief Introduction

- Established in **2004** with register capital of USD16.2 million.
- Unilumin went to public in **2011**, it is the first public Chinese LED display company.
- Products exported to **120** countries and region worldwide.



# Mile stones

2004  
Incorporated

2007  
Sales Volume: 100 million

2010  
50+ pavilions in  
Shanghai World Expo use  
Unilumin LED display.

2012  
Acquire Radiant opto  
Establish subsidiary in U.S.

2014  
Sochi Olympic Winter Games  
Acquire LAMP Technology

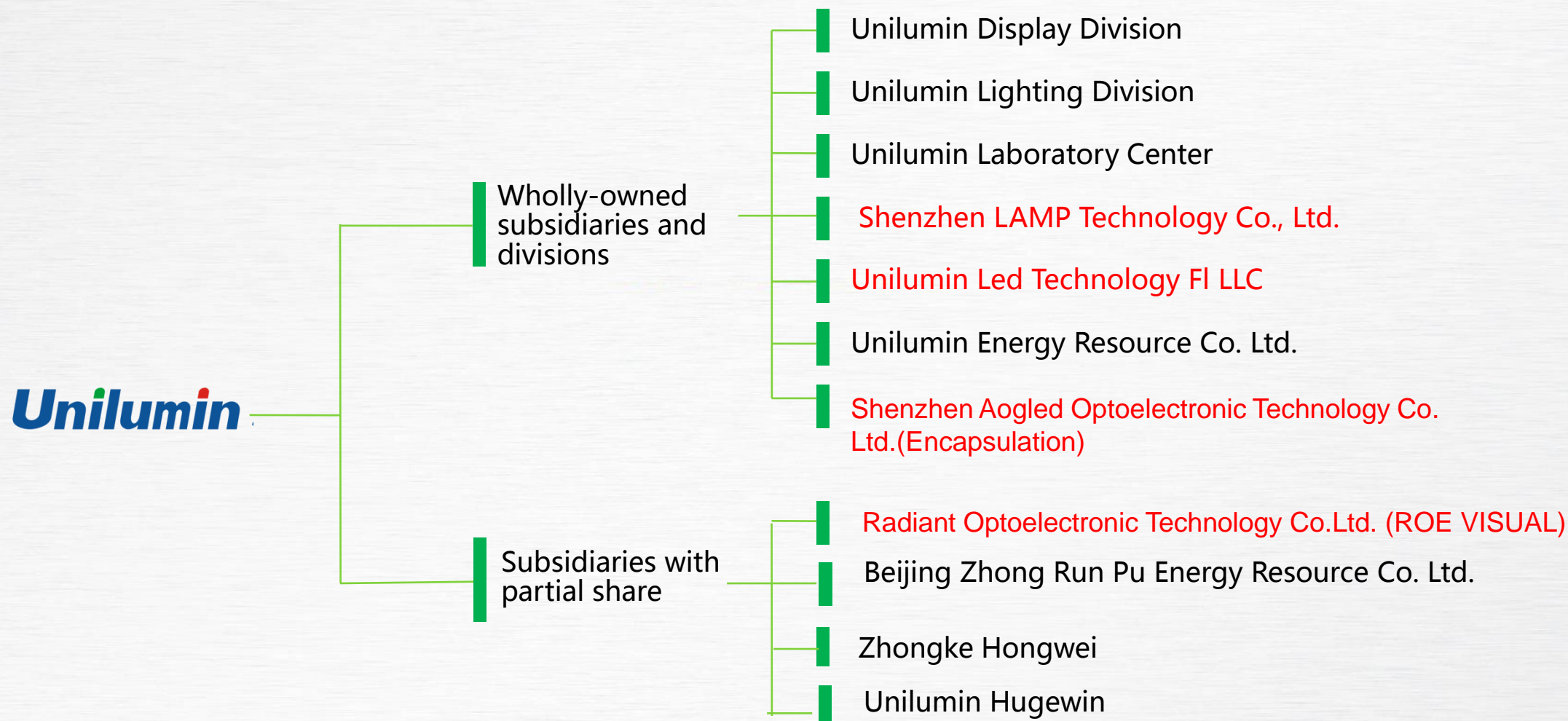
2005  
Sub-SMD product  
eliminated

2008  
National high-tech  
enterprise

2011  
•Public listed company  
•World Horticultural Exposition  
•The Asian Games  
•SHENZHEN Universiade

2013  
Establish European support center  
Kazan Universiade  
Miss World 2013

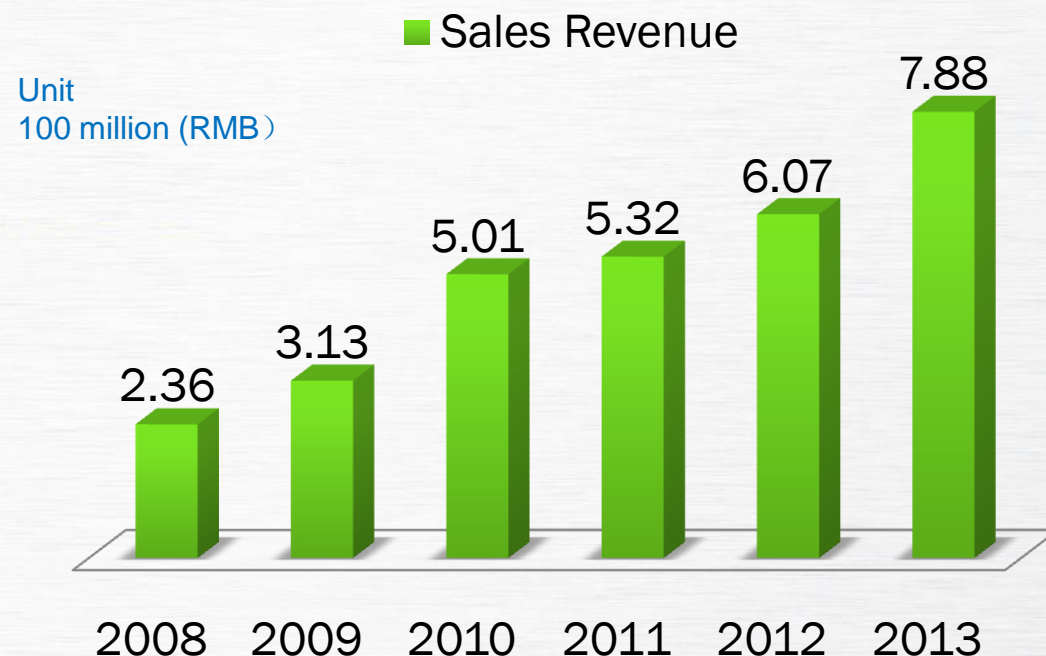
# Organization structure





# Sales growth

- Sales revenue exceeded RMB **100 million** in 3 years after establishment.
- **27.2%** AAGR since 2008.
- RMB **788 million** (USD \$125 million) sales income in 2013, 29.8% YoY growth, ranging **no.1** in the industry.





# Cutting edge Technologies

Technology advantage is the core competence



# Industry leading R&D capability

- **118 R&D people** - The largest and most professional R&D and engineering team in industry
- Unveiled world first **glass-free 3D** LED display in 2013, released world first **0.8mm** UHD LED display in 2014, sells the world first **1.0mm** UHD LED display in October, 2014.



# Industry leading technical strength



# 211 patents recognized

No.1 in China LED industry



# Industry leading technical strength

Approved by  
SGS & TUV



**Central lab** occupies 10,764 sq.ft room and boasts with more than 60 different kinds of testing devices.

It is **the only national-level lab** in China LED industry.





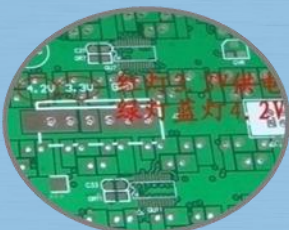
# Worldwide certificates



# Energy-saving Technology

After taking various measures, the new generation of Led displays is more environmental friendly and energy-saving. Energy-saving reaches up to **51%**.

5



Circuit design



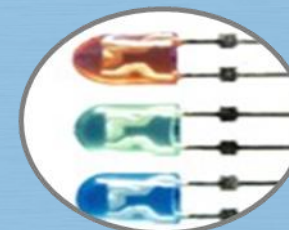
Power supply design



Mechanical design



Intelligent control systems



LED types



**LED Technology Innovation Award-**  
Full-color LED Display Energy-saving  
Design 2010





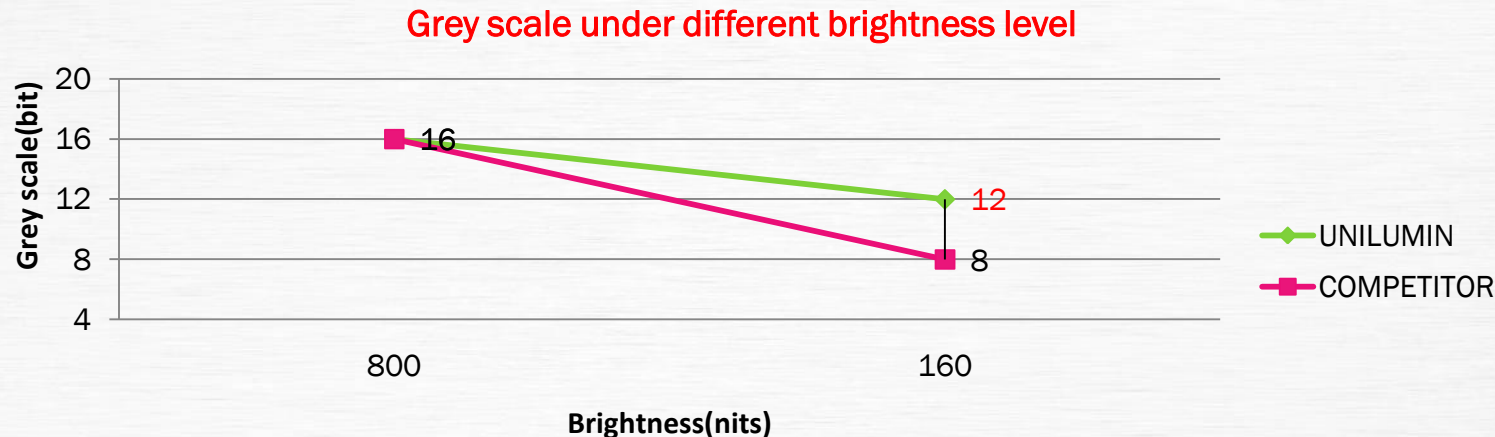
# High grey scale under low brightness level



1/4000  
Shutter speed

# High grey scale under low brightness level

- Broadcast and control room applications require very low brightness products, thus to maintain high grey scale under low brightness level is critical.
- Unilumin's cutting-edge processing technology combines with high quality components, facilitates to maintain high grey scale under low brightness.



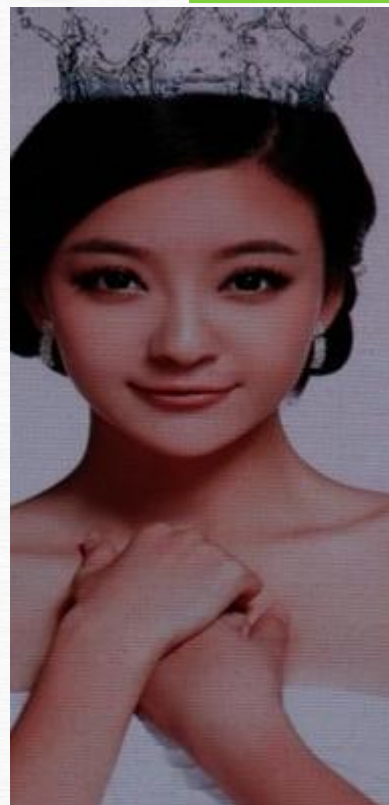


# Leading-edge Calibration Technology

Before  
calibration

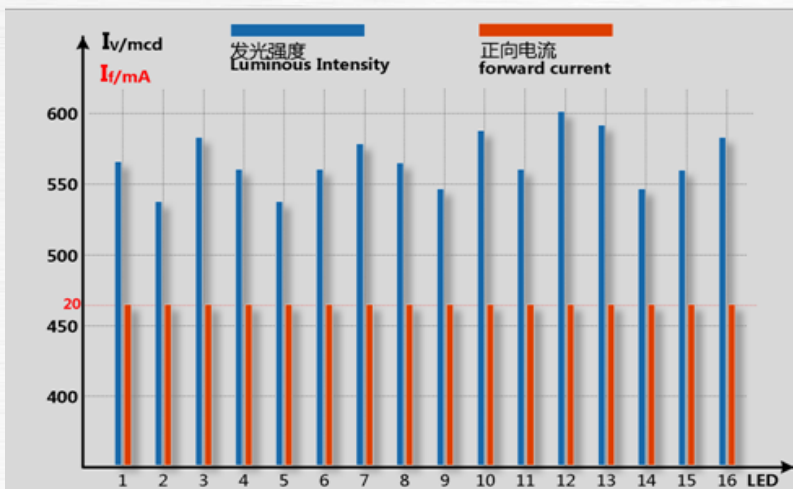


After  
calibration

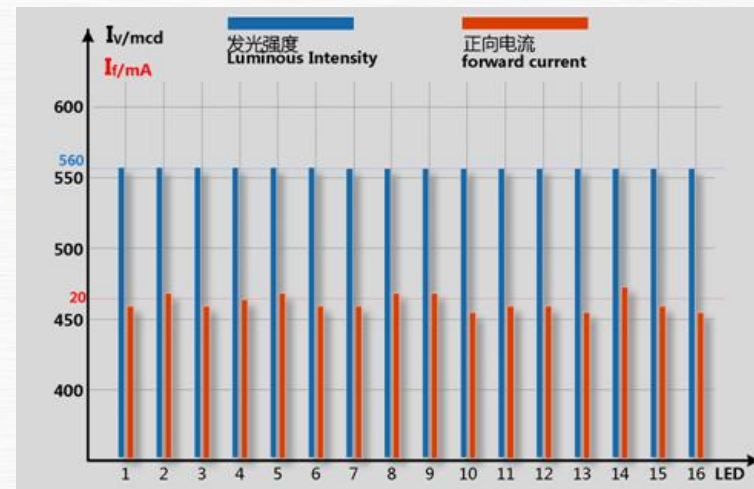


- Calibration ensures the uniformity of color and brightness, visual effect and picture quality can be rapidly improved by calibrating after 2-3 years using.

# Leading-edge Calibration technology



Before Calibration



After Calibration

Before brightness calibration, brightness deviation is up to 8%, Unilumin calibration technology will be able to lower the value to 1%.

# Leading-edge Calibration Technology

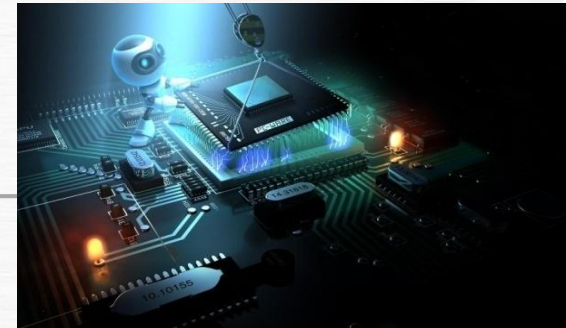


After calibration, chromaticity coordinates :  $x, y \leq \pm 0.0015$ .



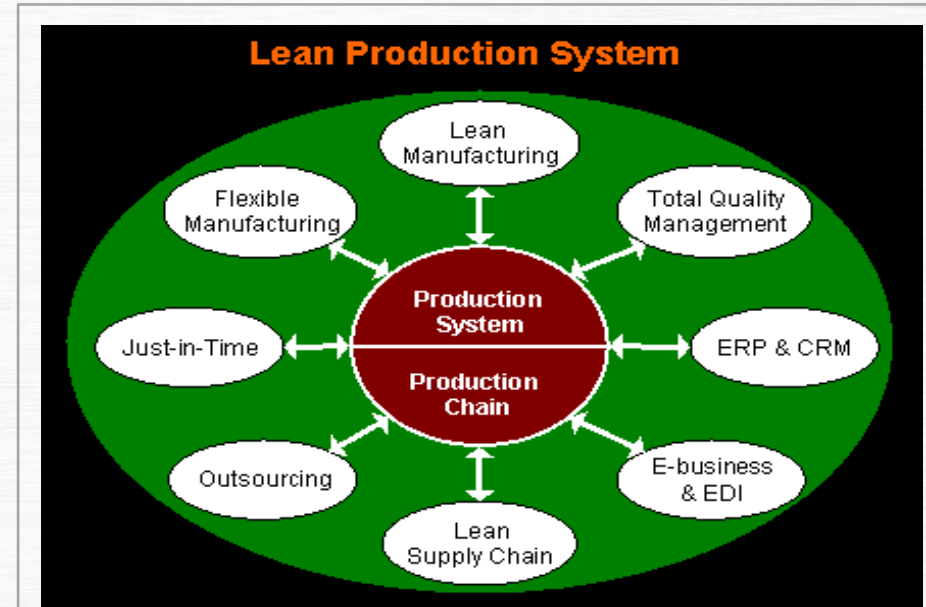
# State of the art production

A dedicated process when core competence formed





# Lean production



Invite **Panasonic team** as consultant for improving production management

# Lean production – SAP IT Solution

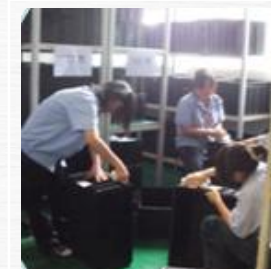
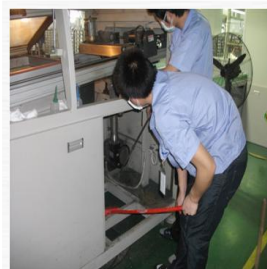
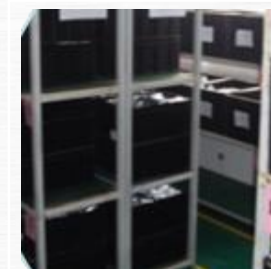


- SAP solution seamlessly integrates supply chain management, Enterprise Controlling, Production Planning, Material Management, Plant Maintenance, Quality Management, as well as financial management.
- Improving management & production efficiency.

# Lean production – 7S's management

## "7S' s management"

sort, straighten, sweep, sanitary, sentiment, safety, speed/saving





# UTV UHD LED display workshop

- Individual UHD LED workshop boasts with 4 production lines.
- Production capacity reaches to 1300m<sup>2</sup> for 1.9mm product





# Industry leading production capacity

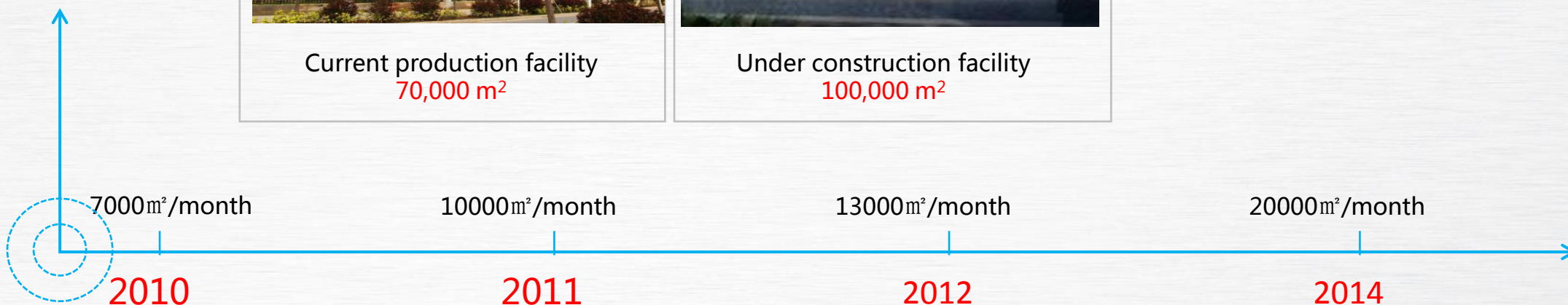


Current production facility  
70,000 m<sup>2</sup>



Under construction facility  
100,000 m<sup>2</sup>

Production facilities  
**170,000** m<sup>2</sup>



**H**ighest reliability

We build what you can rely on



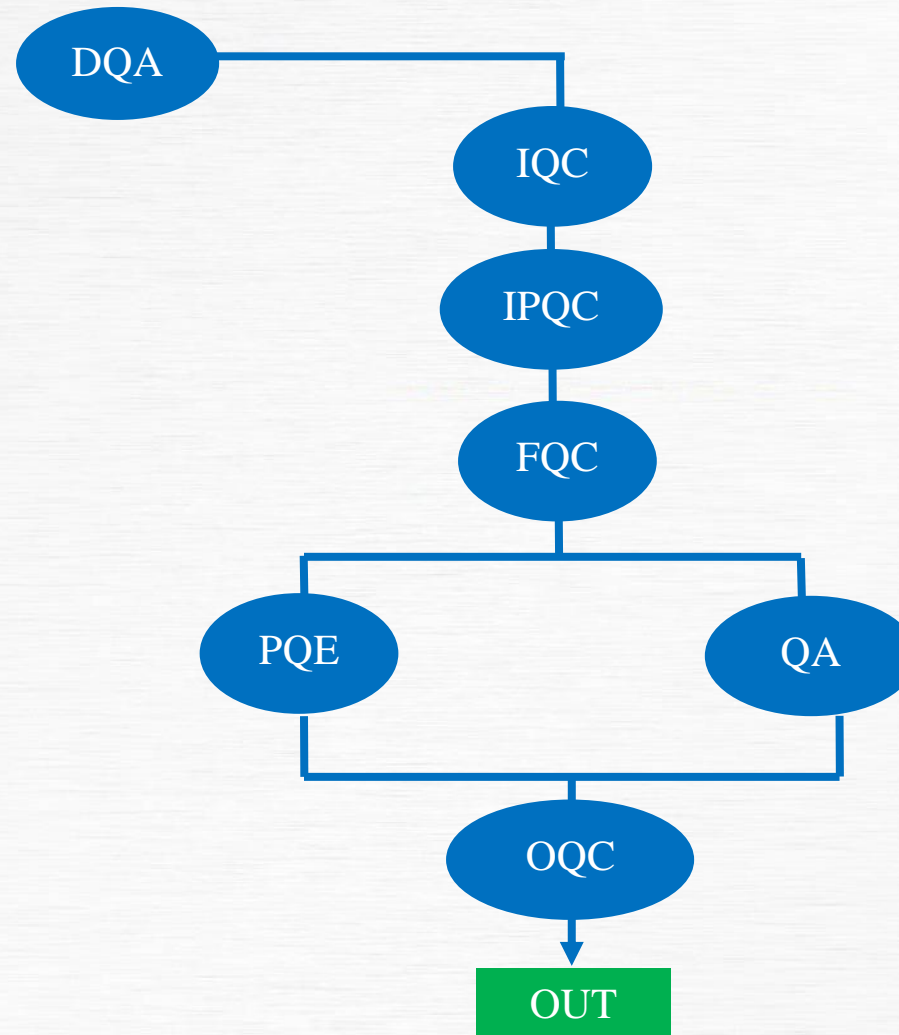
# Total Quality Management- ISO management system



Introduces **ISO9001** quality management system and **ISO 14001**  
Environment management system.



# Total Quality Management



# "StormTest" reliability test program



3 times aging process



Vibration withstand test

2 times waterproof test



High voltage withstand test

Salty-mist environment test



Varying temperature withstand test

Storm environment test



Color & brightness calibration

# "StormTest" reliability test system



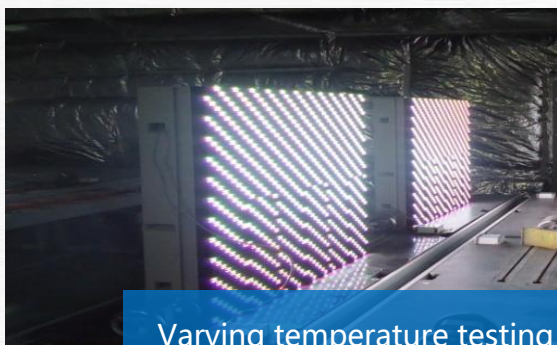
Water-proof testing



Vibration withstand testing



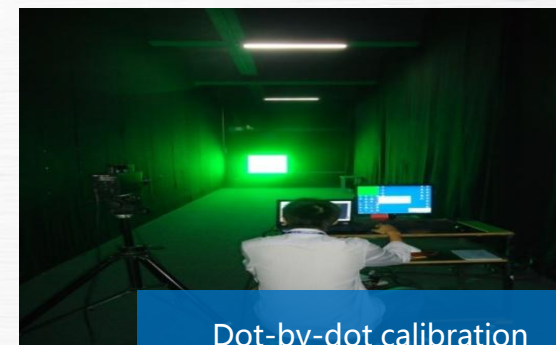
Salty-mist environment testing



Varying temperature testing



Storm environment testing



Dot-by-dot calibration



We build what you can **rely on!**

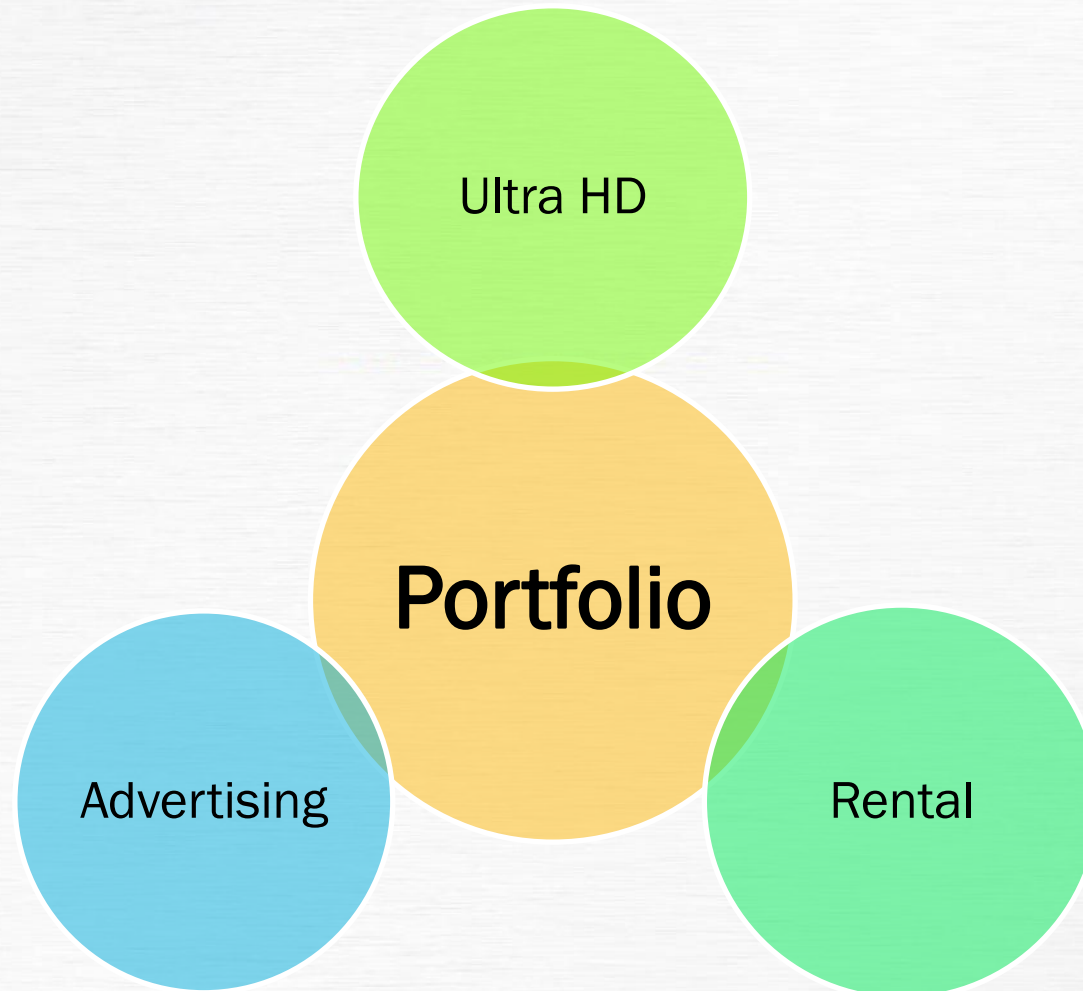
# Portfolio

A rich product portfolio to meet your requirements



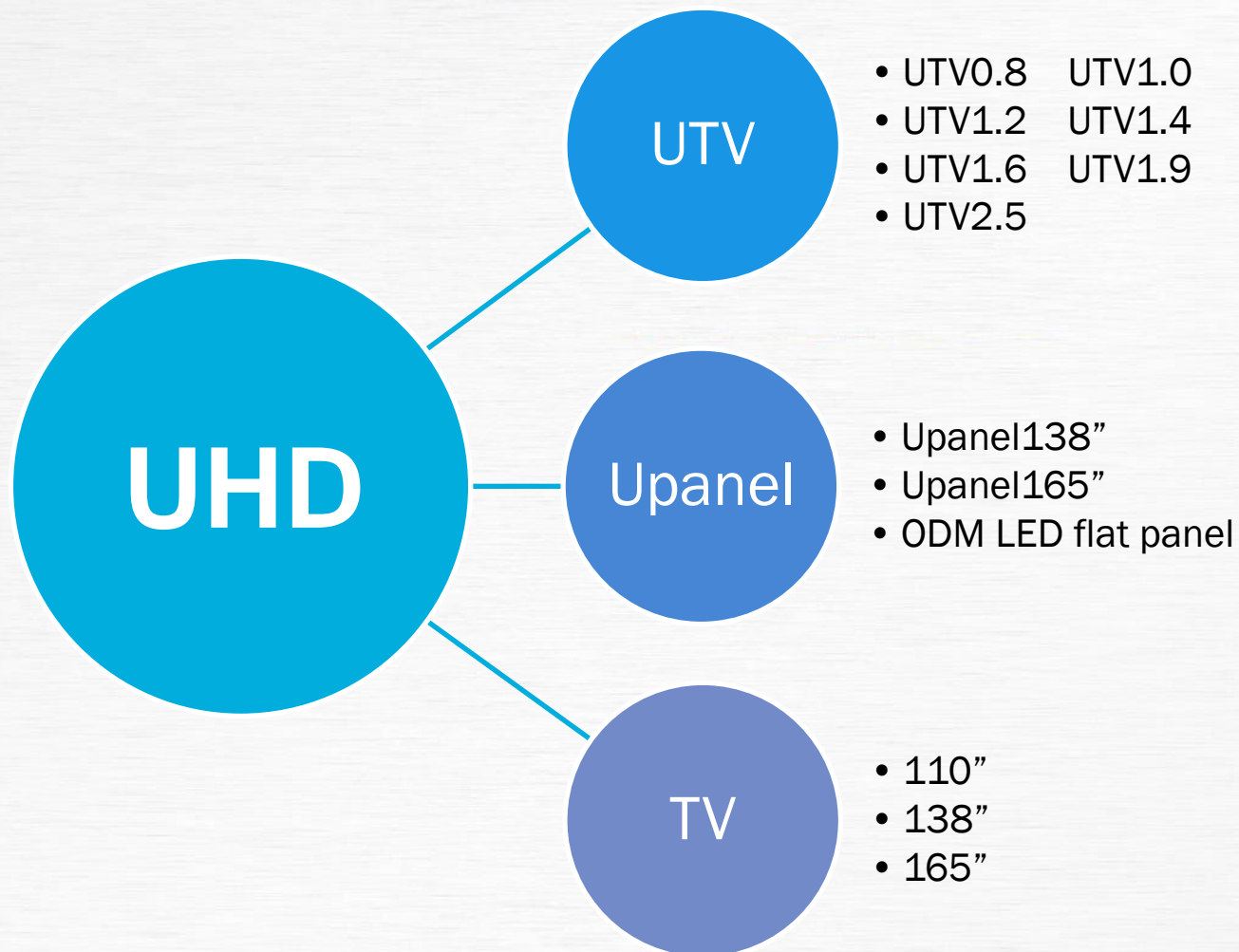
HD & RENTAL		SPORTS		UFIX SERIES		CREATIVE
Upad Rental		Ribbon	Perimeter	Indoor	Outdoor	Usphere
Utile	UTV	Center Hung		Umesh	Ustorm	Uglass

# Unilumin portfolio



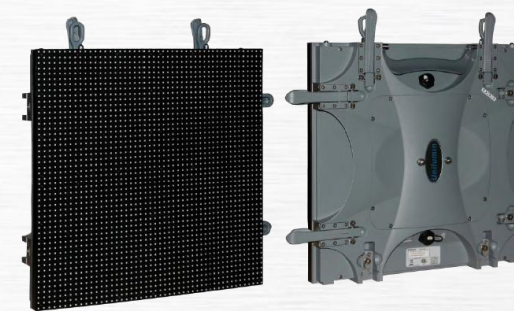
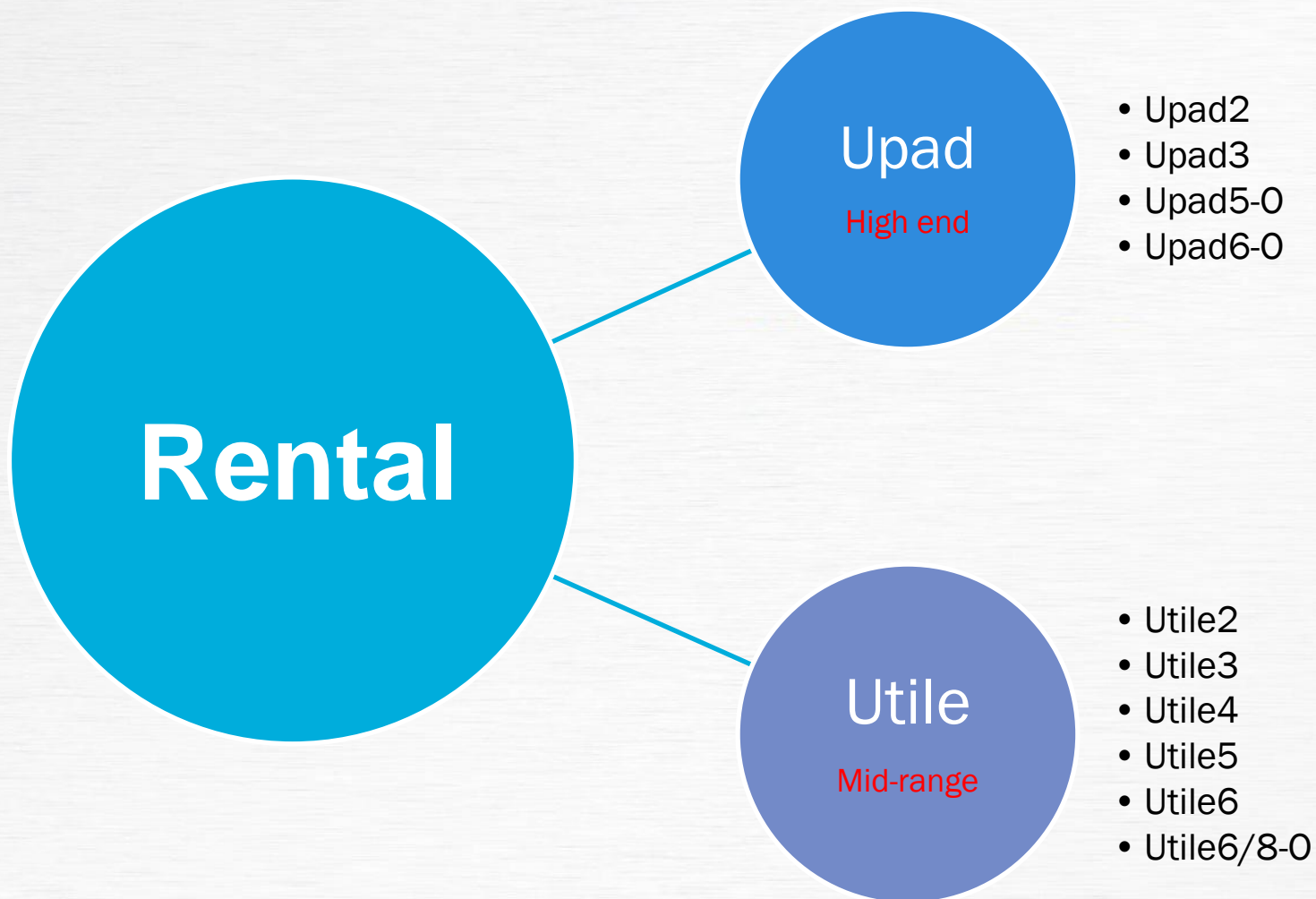


# Ultra HD Series

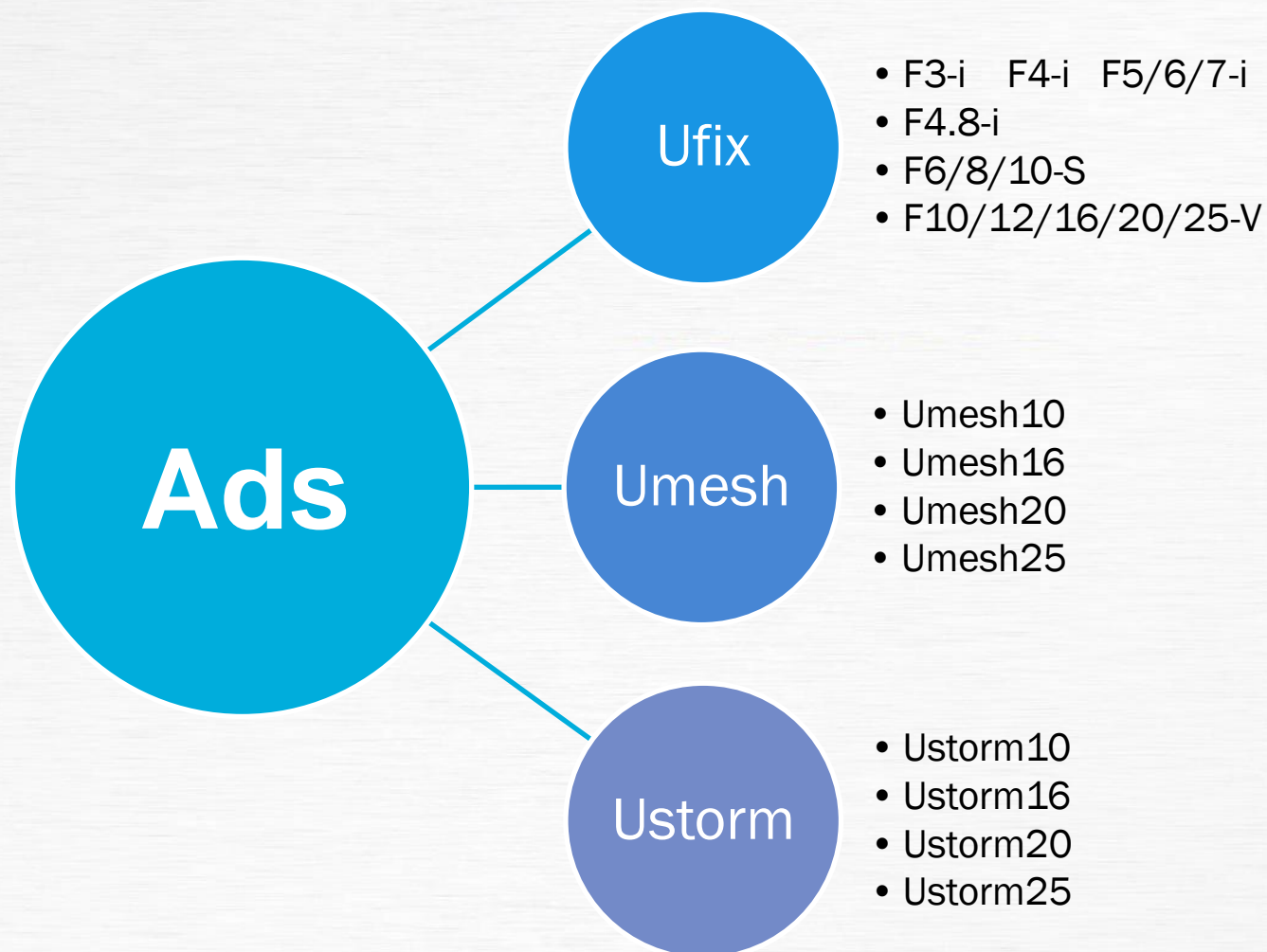


Pending

# Rental Series



# Advertising Series



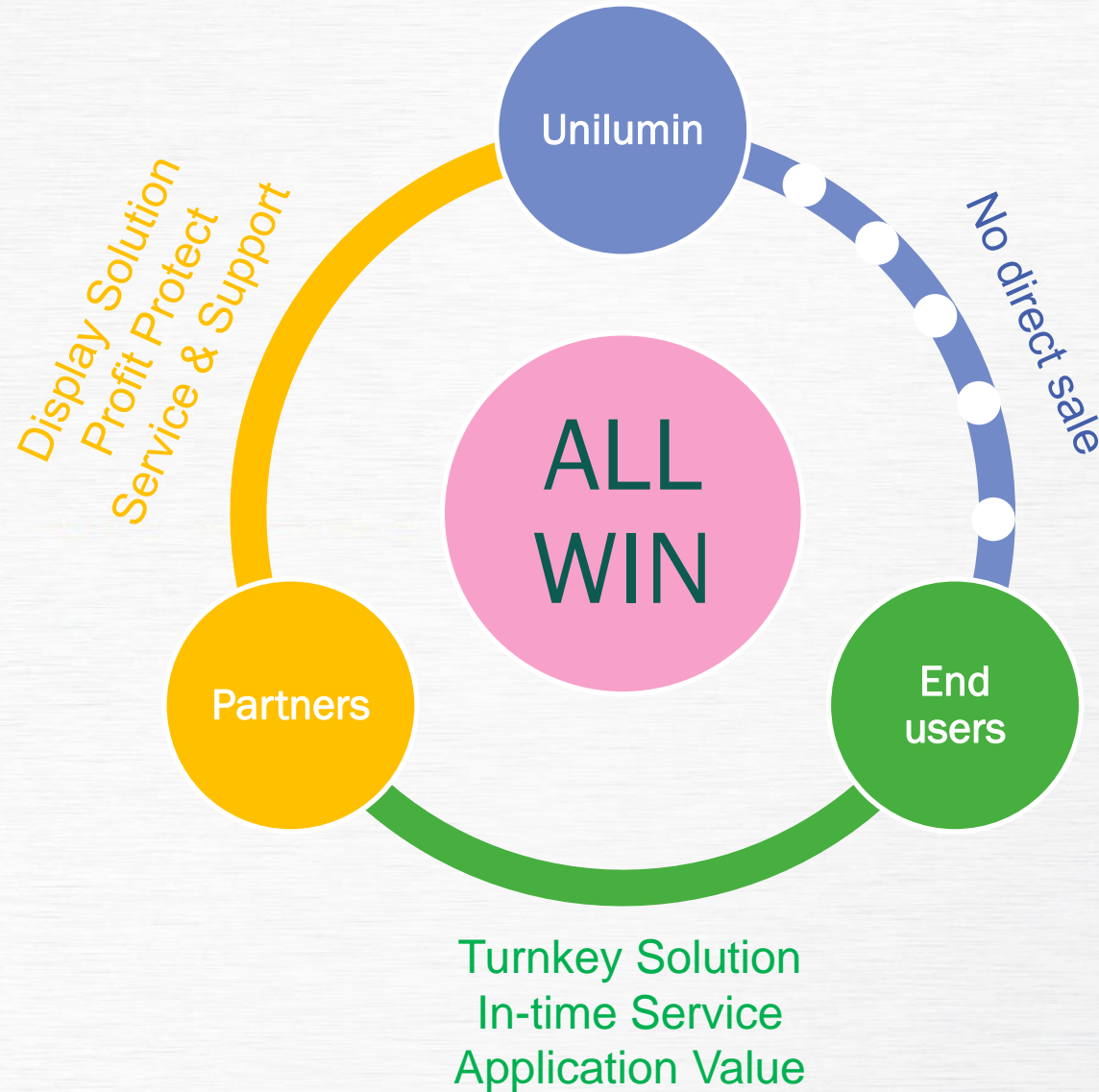


# Marketing

All for Unilumin and its partners' joint success



- **No** direct sale to end user.
- End users obtains **added value** from local suppliers other than manufacturer, value added product & service are guaranteed.
- This is the **eco-system** that Unilumin builds.

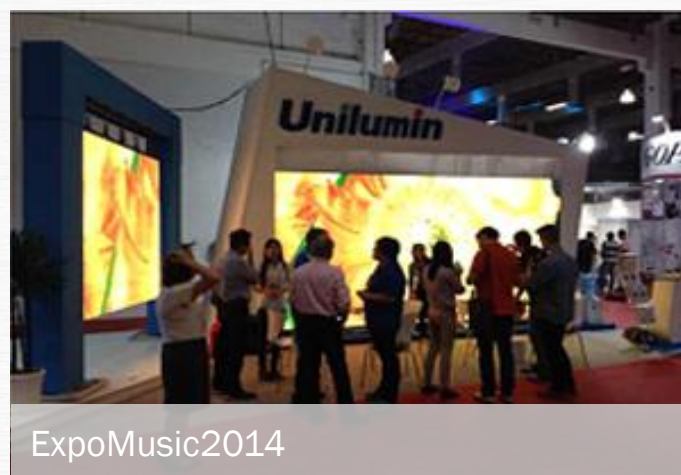


25 exhibitions worldwide

14+11

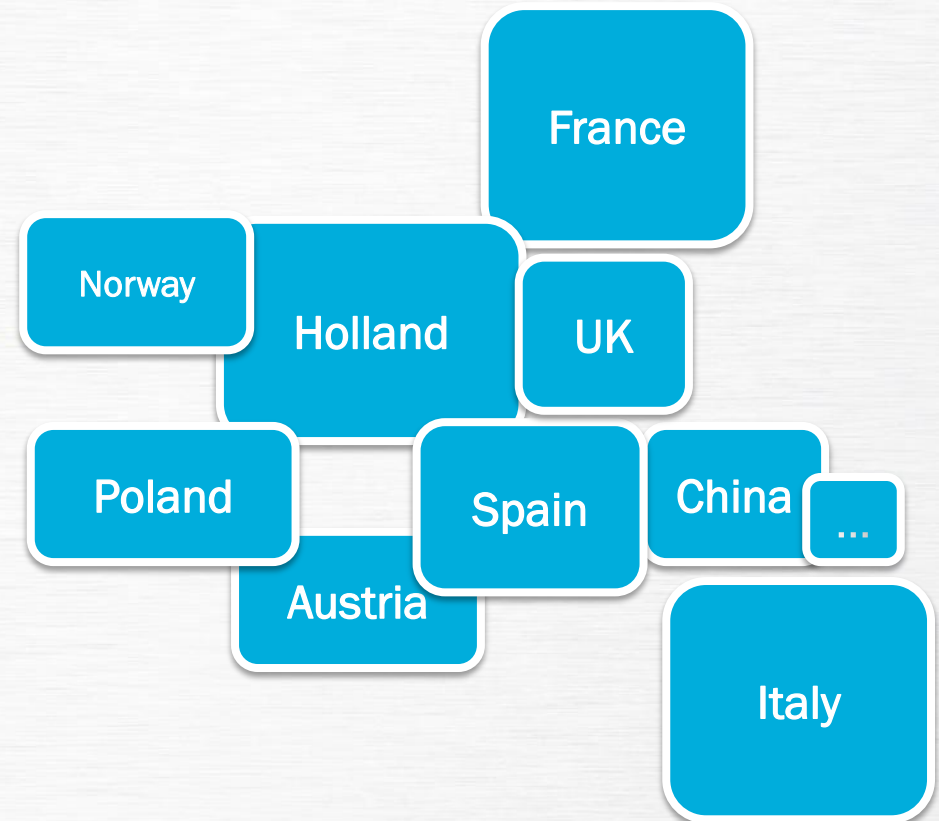








38 Road Shows worldwide  
30+8





6000 AV professionals educated



**\$10.56 million**

Exhibits and marketing investment



UNI

Partner Program

Team up with **1,280 talents** of Unilumin to boost your business.

Partial benefits below.

- Project registration
- Discount for purchasing demo products
- Rebates in accordance with sales and target
- Exhibits support
- Technical support
- Joint marketing support
- Sales leads benefit
- Training support

All for our **joint** success!



# References

Extensive Experience in LED display field worldwide



# LED display references

---

## Classical projects



Sochi 2014 Olympic Winter Games | 216 pcs of cylindrical LED display





The 27th Summer Universiade, Kazan, Russia | 3650 sq.m of 25mm Umesh









Miss World 2013 event in Indonesia | Utile6 | Total 520 SQM, size for this reference not specified





4080 sqm of F25-V in Ocean park, China





UEFA European Championship, 2011 | 1643 sq.m of 20mm Uperimeter



1300 sqm of F25-V for World Horticultural Expo 2011





South Africa outdoor P20 65 sqm



Henan Province indoor P16 156 sqm



EXPO Center Strip Display P18 380 sqm



Netherlands outdoor P12 68 sqm



Saudi Arabia outdoor P31.25 580 sqm



Anhui Province curtain P10 85 sqm

# LED display references

---

Control room





Datong railway monitor and command center | 2.5mm | 74 SQM





Smart city management platform in Lanzhou | 3mm | 70 SQM



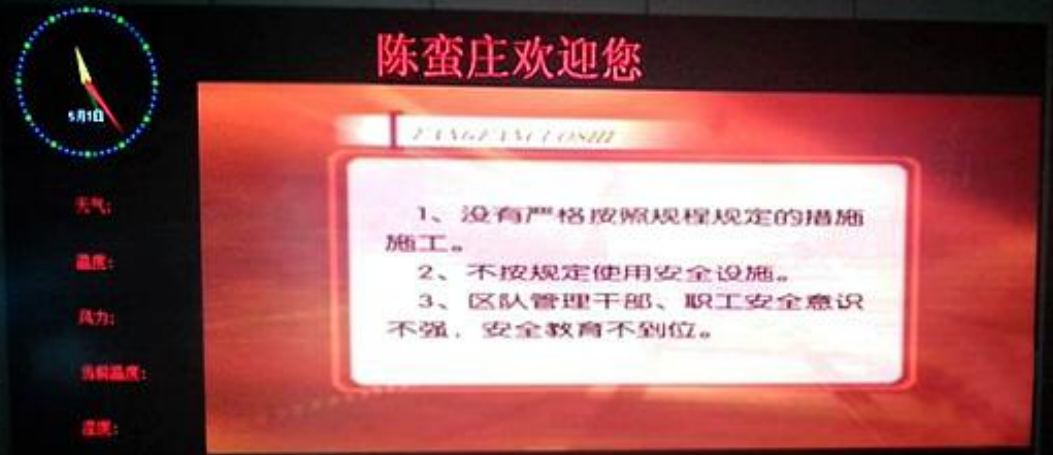
Police monitor and command center | 3mm | 82.4SQM





Traffic monitor and command platform | UTV1.9 | 17.28 SQM







Video conference room-Confidential bureau of Ya'an, China | UTV1.9 | 11.06 SQM





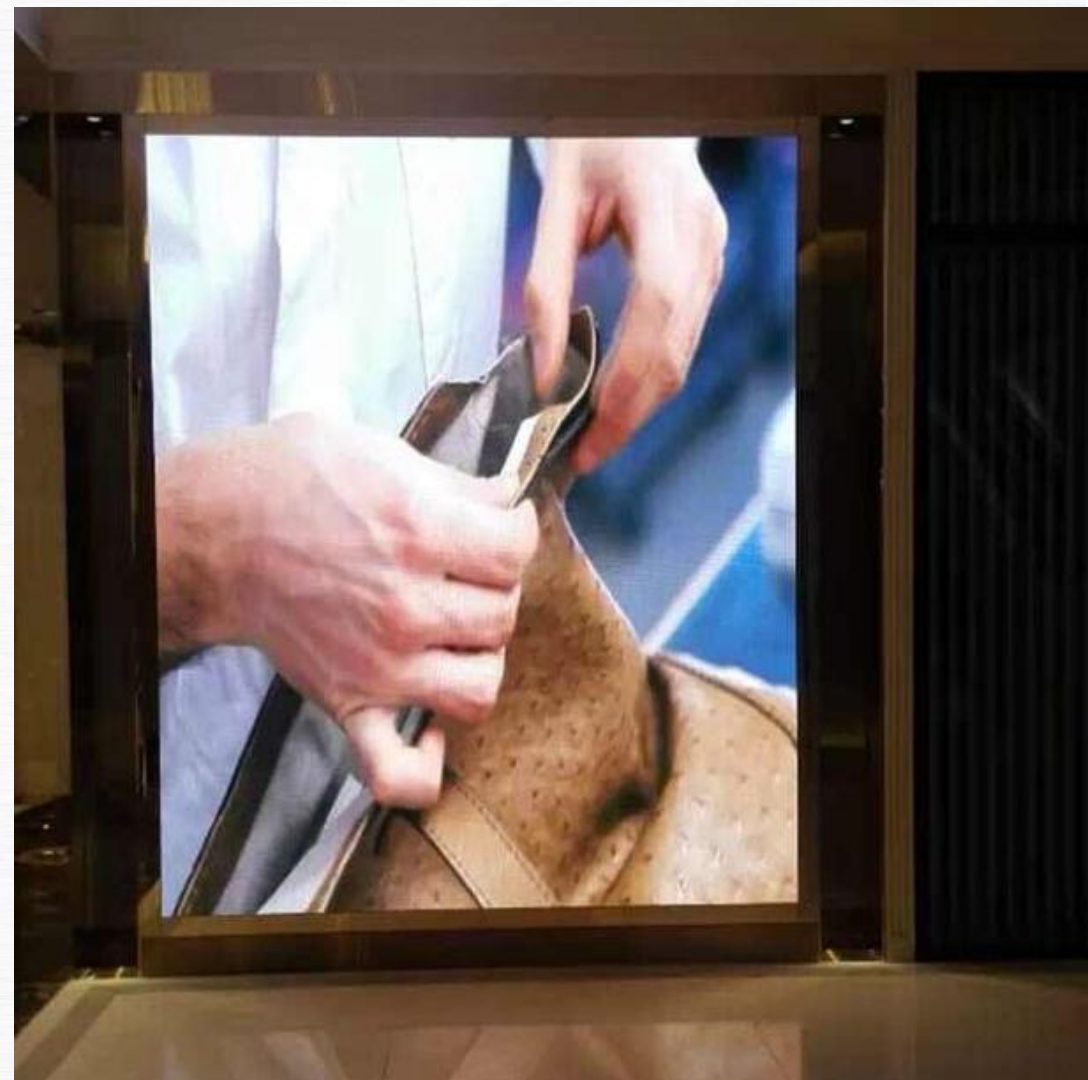
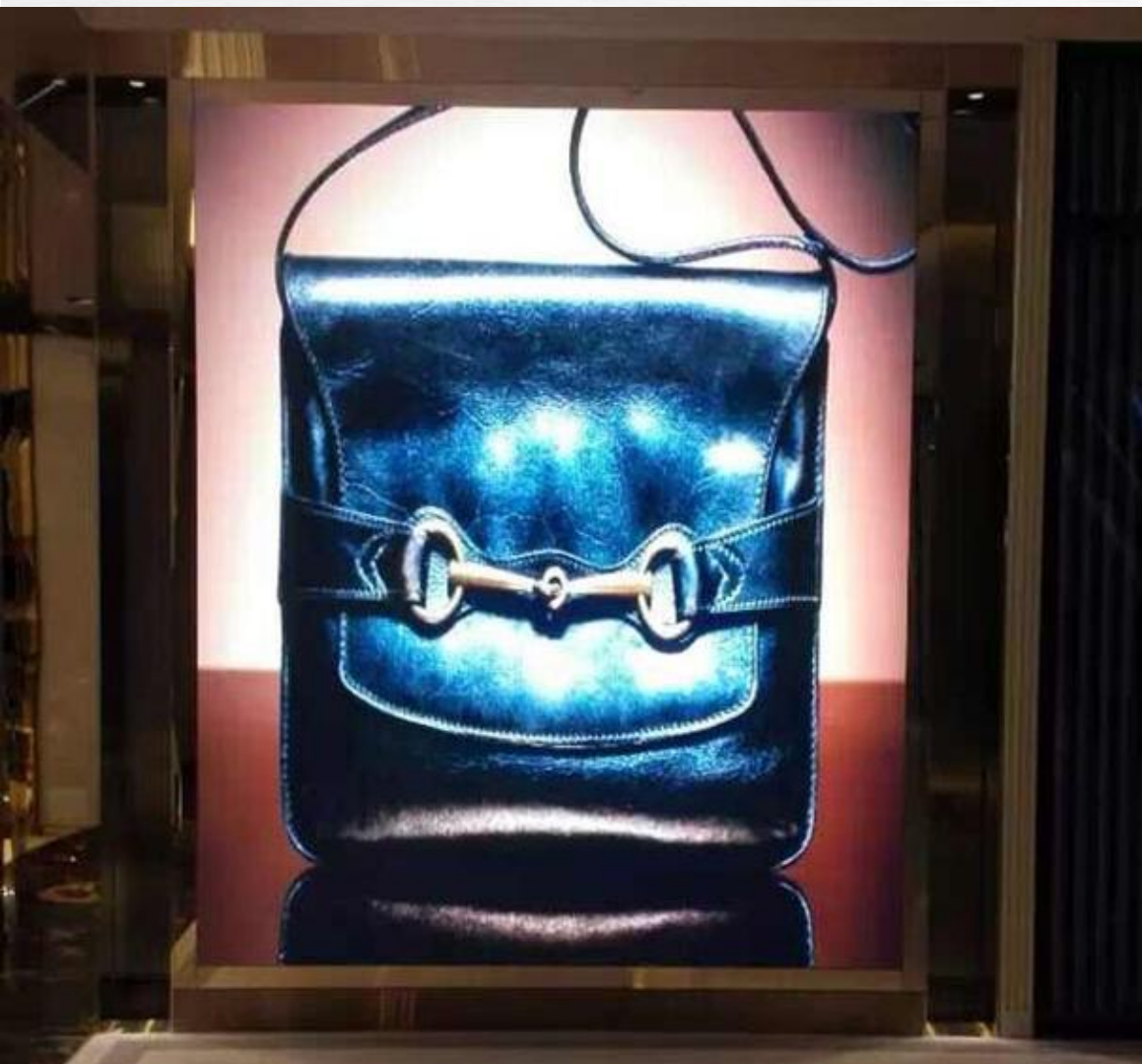
# LED display references

---

Retail and public display











GUCCI the garden, Malaysia | 3mm | 6 SQM



Yunnan International Airport, China | 3mm | 11.36 SQM



# LED display references

---

Broadcast













# LED display references

---

Corporate & Exhibition







Conference room of Wuhan Construction Committee | UTV2.5 | 38SQM

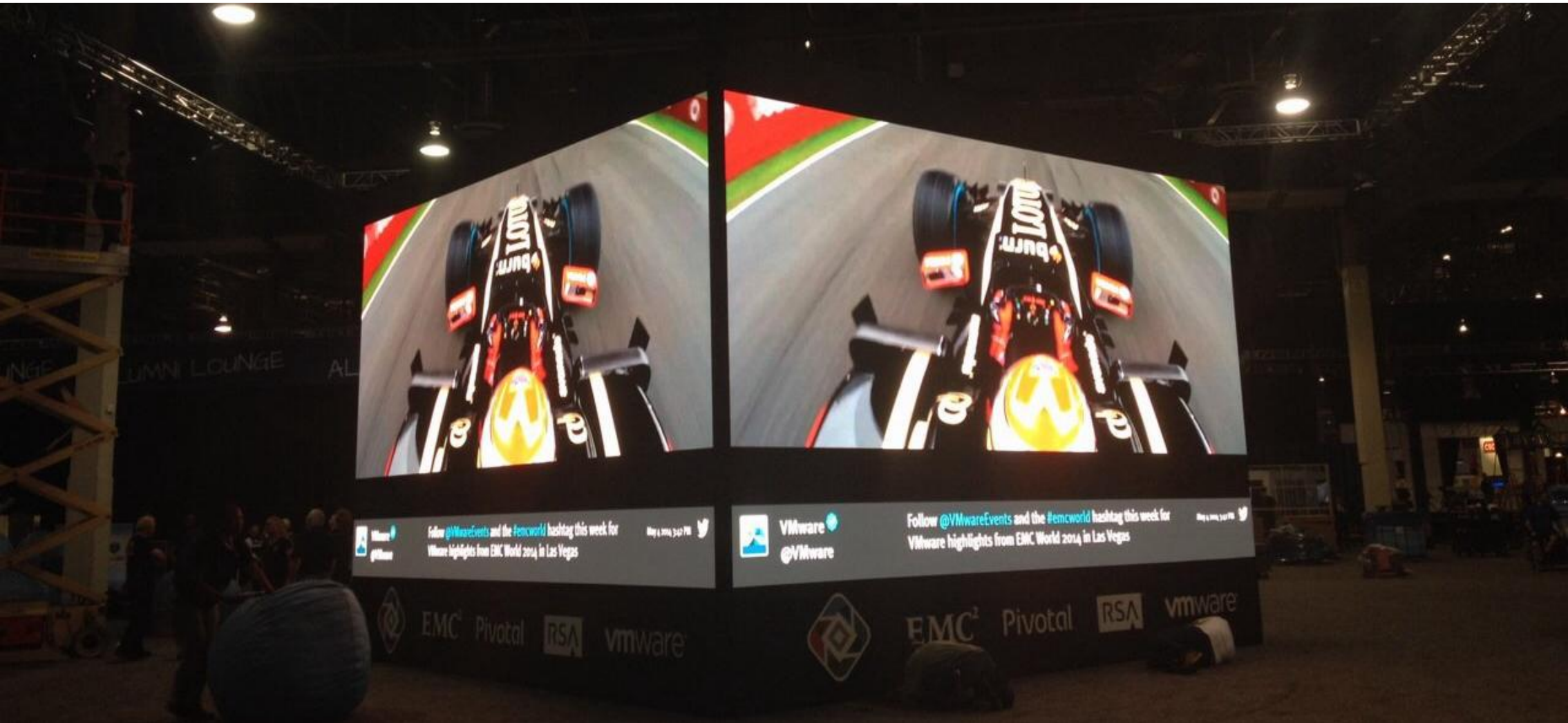
















Lincoln booth – LA Auto show 2011 | 3mm | Total 100 SQM, size for this reference not specified





Volvo booth – Brazil Auto show 2011 | 3mm | Total 100 SQM, size for this reference not specified





Looking forward to

Partnering with you!



Stay Connected!

---

